

Fiber Optic Patch Cords



OM5 - LC/LC

✓ Duplex patch cord

✓ Individual test report

✓ LSZH outer sheath

✓ various connectors & fiber classes

Abstract

Fiber optic patch cords, duplex, various connectors, Singlemode & Multimode, OM1 to OM5

Features

- LSZH (Low Smoke Zero Halogen) outer sheath
- I-VH-2G-XXX (Multimode); I-VH-2E-XXX (Singlemode)
- Cable outer diameter: OM1 to OM4: 3.0 mm; OM5: 2.0 mm
- Connectors with ceramic ferrule
- Available with PC (physical contact) and 8° APC (angled physical contact) polish
- Double colored kink protection sleeves (on Multimode cables up to OM4)
- Each cable with test report in polybag
- Available connectors: LC, SC, ST (E2000/LSH please see separate data sheet)
- Available fiber classes: OS2 (09/125 μ), OM1 (62.5/125 μ), OM2, OM3, OM4 & OM5 (50/125 μ)

Product Overview

The Fiber Optic Patch Cords are available in various fiber classes and connector combinations to cover all necessary requirements. Each cable is single packed in a polybag with a test report that guarantees best performance in typical application scenarios like telecommunication, rack cabling, sensor technologies or industrial applications.

Technical Properties

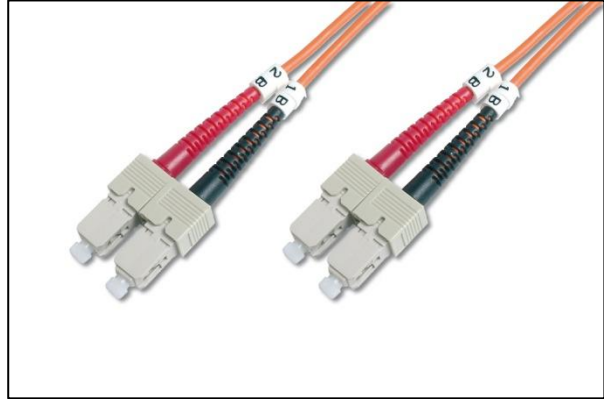
Description	Value
Insertion loss	≤ 0.30 dB
Return loss	≥ 30 dB (UPC)
Storage- & operating temperature range	-40 °C up to +85 °C
Length tolerance ≤ 10 m	+100 mm/-0 mm
Length tolerance > 11 m	+50 mm/-0 mm

Product Images

SM OS2 - ST to ST



MM OM1 - SC to SC



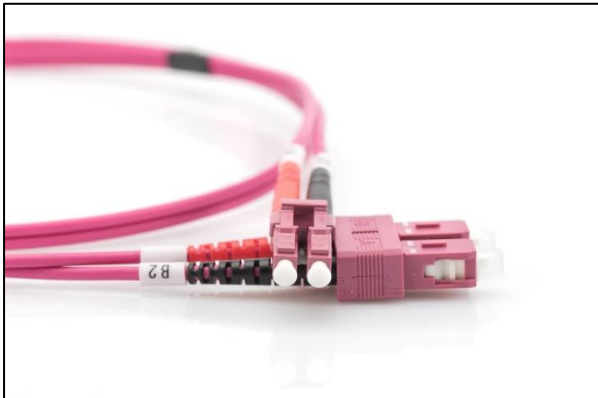
MM OM2 - LC to LC



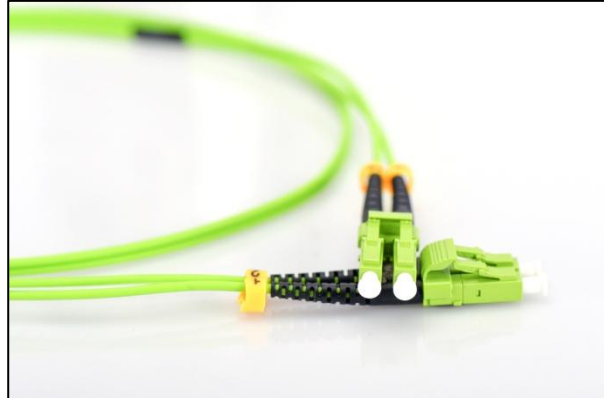
MM OM3 - ST to SC



MM OM4 - LC to SC

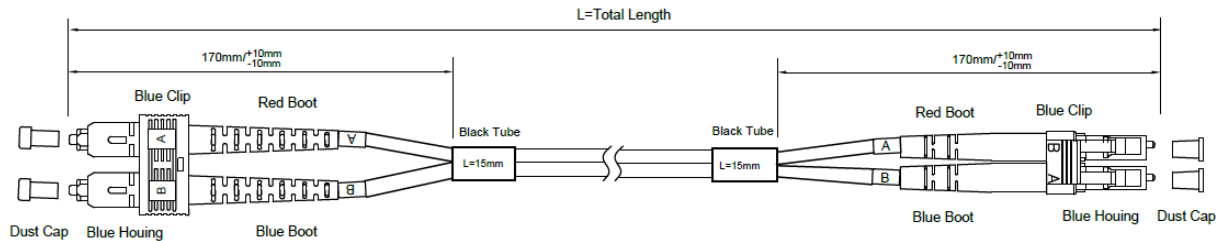


MM OM5 - LC to LC



Technical Drawings

Example SM OS2 - SC to LC



Product Number Information

MM OM5

Item code	Connector 1	Connector 2	Polish
DK-2533-xx-5	LC	LC	PC
DK-2522-xx-5	SC	SC	

* xx = choose a length (e.g. 1 meter = "01"; 10 meter = "10"; etc.)

MM OM4

Item code	Connector 1	Connector 2	Polish
DK-2533-xx-4	LC	LC	PC
DK-2522-xx-4	SC	SC	
DK-2532-xx-4	LC	SC	
DK-2531-xx-4	LC	ST	
DK-2511-xx-4	ST	ST	
DK-2512-xx-4	ST	SC	

* xx = choose a length (e.g. 1 meter = "01"; 10 meter = "10"; etc.)

MM OM3

Item code	Connector 1	Connector 2	Polish
DK-2533-xx/3	LC	LC	PC
DK-2522-xx/3	SC	SC	
DK-2532-xx/3	LC	SC	
DK-2531-xx/3	LC	ST	
DK-2511-xx/3	ST	ST	
DK-2512-xx/3	ST	SC	

* xx = choose a length (e.g. 1 meter = "01"; 10 meter = "10"; etc.)

MM OM2

Item code	Connector 1	Connector 2	Polish
DK-2533-xx	LC	LC	PC
DK-2522-xx	SC	SC	
DK-2532-xx	LC	SC	
DK-2531-xx	LC	ST	
DK-2511-xx	ST	ST	
DK-2512-xx	ST	SC	

* xx = choose a length (e.g. 1 meter = "01"; 10 meter = "10"; etc.)

MM OM1

Item code	Connector 1	Connector 2	Polish
DK-2633-xx	LC	LC	PC
DK-2622-xx	SC	SC	
DK-2632-xx	LC	SC	
DK-2631-xx	LC	ST	
DK-2611-xx	ST	ST	
DK-2612-xx	ST	SC	

* xx = choose a length (e.g. 1 meter = "01"; 10 meter = "10"; etc.)

SM OS2

Item code	Connector 1	Polish 1	Connector 2	Polish 2
DK-2933-xx	LC	PC	LC	PC
DK-2922-xx	SC		SC	
DK-2932-xx	LC		SC	
DK-2931-xx	LC		ST	
DK-2911-xx	ST		ST	
DK-2912-xx	ST		SC	
DK-293LCA3LC-xx	LC	APC	LC	PC
DK-292SCA2SC-xx	SC		SC	
DK-292SCA3LC-xx	SC		LC	
DK-293LCA3LCA-xx	LC	APC	LC	APC
DK-292SCA2SCA-xx	SC		SC	
DK-292SCA3LCA-xx	SC		LC	

* xx = choose a length (e.g. 1 meter = "01"; 10 meter = "10"; etc.)